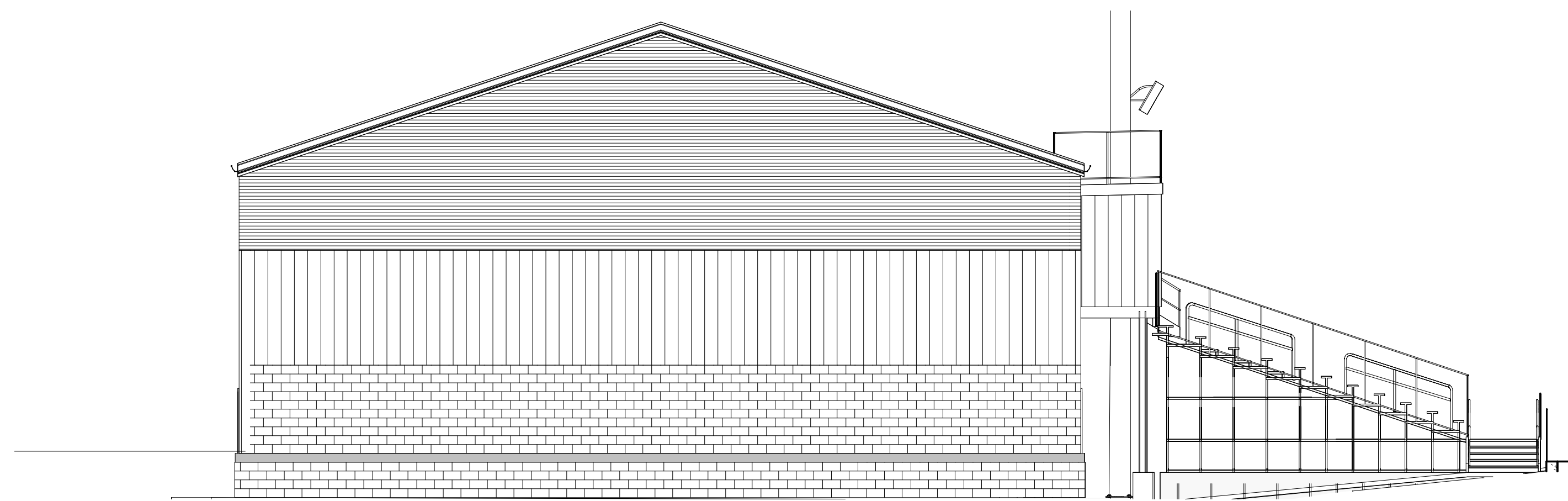




Revision Schedule

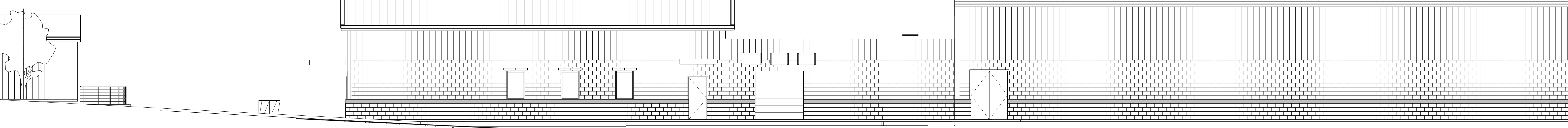
| Revision Number | Revision Date |
|-----------------|---------------|
| | |



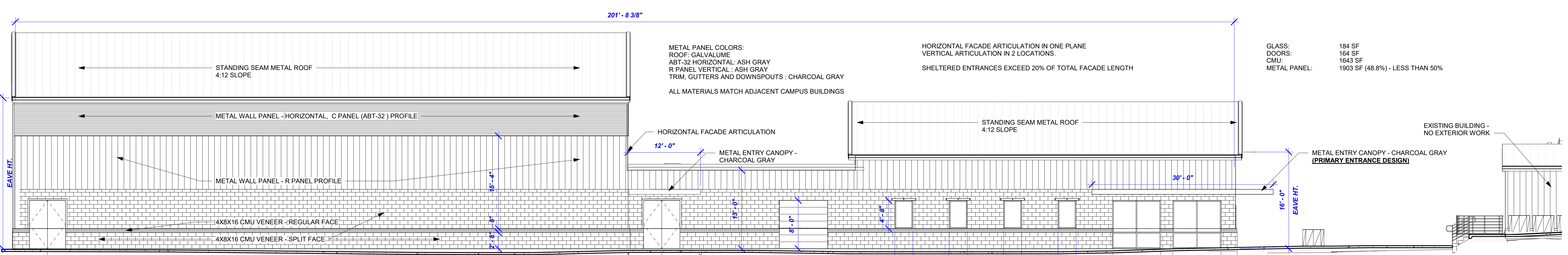
4 WEST ELEVATION
1/8" = 1'-0"



3 EAST ELEVATION
1/8" = 1'-0"



2 NORTH ELEVATION
1/8" = 1'-0"



1 SOUTH ELEVATION
1/8" = 1'-0"

BRAZOS CHRISTIAN SCHOOL - STADIUM IMPROVEMENTS
3000 W VILLA MARIA
BRYAN, TX
EXTERIOR ELEVATIONS

Project Number:
Sheet issue date:
4.19.23